

THE PARTNERSHIP



Co-funded by
the European Union

This flyer was funded by the European Union's Asylum, Migration and Integration Unit.



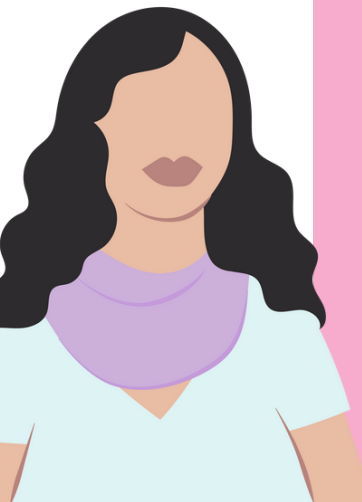
pitch-eu.eu



ABOUT PITCH

PITCH is a three-year project, launched on January 1, 2022. PITCH stands for 'a model for gender-sensitive integration strategies based on Personalised, participaTory, loCal, and multistakeHolder approaches.' PITCH aims to establish a common European ground to support the design and implementation of local integration strategies directed at migrant women.

This project directly engages 210 migrant women from Italy, Greece, Slovenia, Spain, Cyprus, Lithuania and Sweden, and the staff of 5 municipalities, 7 local research/civil organisations and a wide network of Baltic Sea Region cities. Throughout its implementation, PITCH will involve migrant women, social operators, policy-makers, private, and civil and public entities working in the field of integration, as well as the wider public.



ACTIVITIES WITH 210 MIGRANT WOMEN ACROSS EUROPE

30 migrant women in each participating country will work with the the local research/civil entity and the local authority to build their Personalised Roadmap to Integration based on their needs and interests.

A total of 210 women across Europe will participate in:

- 10 gatherings of migrant women ('cozy corners')
- Classes on a) improving skills, b) increasing knowledge about the local society, and c) participate in social activities. Such activities include neighbourhood walks and social cafes for migrant women that will be organised in order to complete in practice the migrant women's personalised roadmap by attending educational/social and upskilling activities based on their interests and needs.
- A world café where they will discuss about their experience with PITCH, the personal gains they made, and the challenges they faced during the activities they participated in as part of their Personalised Roadmap to Integration.



PHASES

1 - EU & NATIONAL LOCAL NEEDS ANALYSIS

The partner organisations will conduct a national analysis to identify local needs, map stakeholders and examine existing integration strategies; co-design the PITCH model for integration strategies; adjust the model into 7 local integration strategies for migrant women with the support of local advisory committees.

2 - LOCAL INTEGRATION STRATEGIES IN PRACTICE

The development of the local integration strategies and the PITCH Model developed will be put into practice in all 7 countries. In this phase, the partner countries will test the strategies by delivering an activity programme tailored to the personal needs and interests of migrant women.

3 - ENGAGING THE PUBLIC

The partnership will initiate a months-long process to promote the lessons learned, the experiences gained and the local strategies developed to social practitioners, policy-makers, local private, public and civil entities and the wider public.

GET INVOLVED

With migrant women at the core of its focus, PITCH welcomes migrant women from Cyprus, Greece, Lithuania, Italy, Spain, Slovenia and Sweden to participate in a series of social and educational activities that will be held throughout the programme.

To bring migrant women's integration challenges into the forefront, PITCH will systematically seek the close collaboration between the private, public and the civil sector as well as the involvement of the general public.

This multi-level, and multi-stakeholder approach will ensure the project's continuation through the adoption of the local integration strategies - based on the PITCH Model - by local authorities, decision-makers and civil and private entities.

FOR MORE INFORMATION

migration@cesie.org

